

**Power Solutions**  
Pop-Up Power Outlets

**CLIPSAL**<sup>®</sup>

by Schneider Electric

**Pop-Up  
Solutions  
when you  
need it**

[clipsal.com](http://clipsal.com)

**CABLE MANAGEMENT**

## Safe power around the home and office

### The Neat And Innovative Power Solution

Clipsal Pop-Up Power Outlets are ideal for any home or office applications where safe and convenient access to power is required. Neat and innovative, Clipsal Pop-Up Power Outlets provide a discreet and tidy appearance when not in use and their pop-up action is sure to impress. They accommodate a twin auto switched socket, which makes them ideal for almost any application.

For greater safety and peace of mind around the home, Clipsal Pop-Up Power Outlets are a fantastic solution for areas such kitchen or workshop bench tops. Electrical cables plugged into outlets on the side of bench tops could pose the risk of appliances or devices being pulled off, but Clipsal Pop-Up Power Outlets safely keep cables away from the risk of being caught or accessible to young children.

### Stylish Colours. Sleek Design.

Clipsal have extended their range of pop-up power outlets to include a selection of colours to complement any interior décor, and when you combine this with the sleek design, you have a power solution that's bound to turn heads.

### Features and Benefits

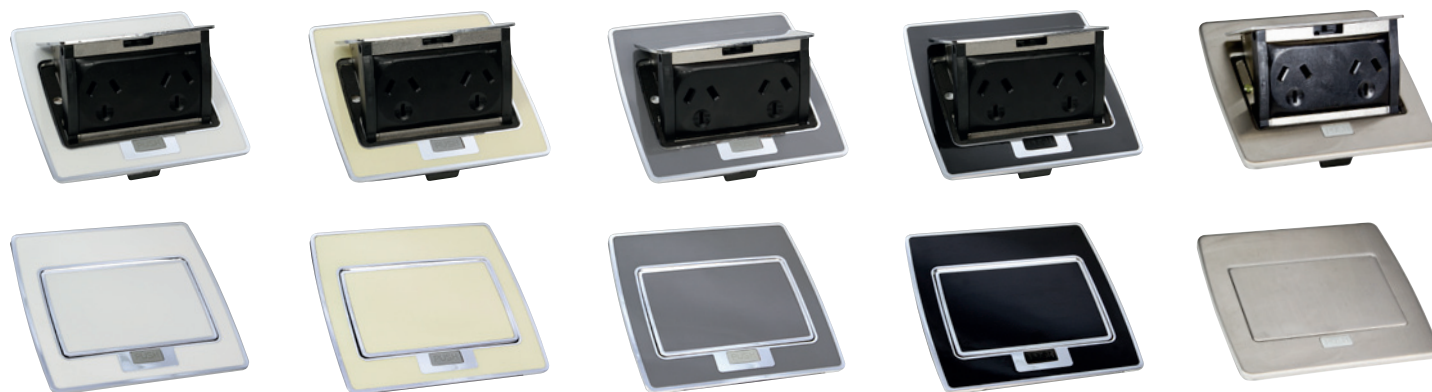
- Easy access to power where you need it
- Twin power outlets
- Wide colour selection available
- Pre-wired for easy installation
- Compact and sleek design
- Splash and dust proof (IP44 rated)
- Safe power solution
- Adjustable lid



### Product Specifications

- Amperage: 10A
- Voltage: 250 a.c.
- Dimensions (mm): 120 x 125 x 80
- Terminal Accommodation: 2 x 2.5mm<sup>2</sup>
- International Protection (IP): IP44

### Colour Selection



White  
SBIP2P-WE

Cream  
SBIP2P-CM

Grey  
SBIP2P-GY

Black  
SBIP2P-BK

Stainless Steel  
SBIP2PSS

For more information about Clipsal's Pop-Up Outlet range, contact your local Clipsal Representative, electrical wholesaler or visit [clipsal.com](http://clipsal.com)

### Schneider Electric (Australia) Pty Ltd

33-37 Port Wakefield Road, Gepps Cross  
South Australia 5094

PO Box 132, Enfield Plaza,  
South Australia 5085

[clipsal.com](http://clipsal.com)

Website: [clipsal.com](http://clipsal.com)  
Contact us: [clipsal.com/feedback](http://clipsal.com/feedback)

National Customer Care Enquiries:  
**1300 2025 25**

Schneider Electric (Australia) Pty Ltd reserves the right to change specifications, modify designs and discontinue items without incurring obligation and whilst every effort is made to ensure that descriptions, specifications and other information in this catalogue are correct, no warranty is given in respect thereof and the company shall not be liable for any error therein.

© 2013 Schneider Electric. All Rights Reserved.  
Trademarks are owned by Schneider Electric Industries SAS or its affiliated companies.