

# DALIBuildings Release Notes

## CONTENTS

Contents .....	1
DALIBuildings 2.0.10 Release Notes.....	2
What's New .....	2
Lux Level Monitoring .....	2
ECG Grouping during Full Sync .....	2
Switch's Advanced Timing Changes .....	2
Bug Fixes.....	2
DALIBuildings 2.0.9 Release Notes.....	3
What's New .....	3
Support for DCDAL31M Firmware 2.....	3
Extended Version Information for ECD .....	3
Bug Fixes.....	3
Known Issues.....	3
DALIBuildings 2.0.8 Release Notes.....	4
What's New .....	4
Wiring Test Enhancement .....	4
Web Service Changes .....	4
Web Service Management Tool .....	4
Bug Fixes.....	4
Known Issues.....	4
DALIBuildings 2.0.7 Release Notes.....	6
What's New .....	6
Web Service Changes .....	6
Location Changes .....	7
Automatic Quiet Mode.....	7
Sequence Improvement .....	7
Bug Fixes.....	7
Known Issues.....	8
DALIBuildings 2.0.6 Release Notes.....	9
What's New .....	9
SQL Server Installation Fix .....	9
ECD Configuration Fix.....	9
Web Service Help .....	9
TreeView Auto Refresh After Database Import .....	9
Minor Fixes .....	9
Known Issues.....	9
DALIBuildings 2.0.5 Release Notes.....	10
Important Notes.....	10
What's New .....	10
Single Software Solution .....	10
Faster Programming .....	11
Building-Mode view .....	14
Custom Zone Improvement .....	14
Web Service Interoperability.....	15
Robust Data Storage.....	15
Upgrading from BETA version .....	15
Multiple Windows User.....	15
License Dongle.....	16
Known Issues.....	16

# DALIBuildings 2.0.10 Release Notes

April 2015

## WHAT'S NEW

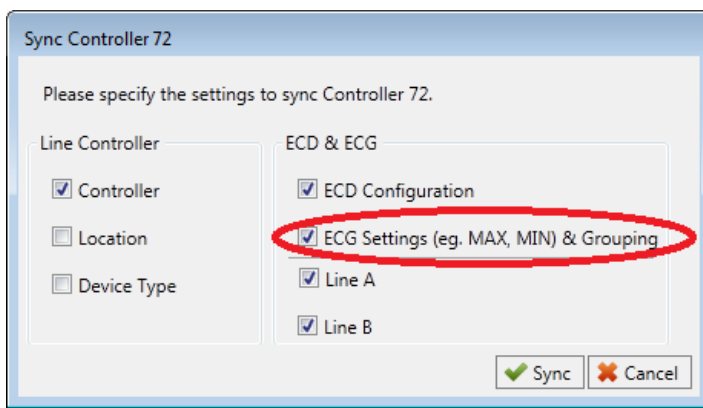
### LUX LEVEL MONITORING

DALIBuildings can be configured to monitor the lux level of certain sensors. The lux level reading can be retrieved from OPC or Web Service.

By default this feature is disabled. To enable it, please go to Tools > Service Options > Lux Level Poll.

### ECG GROUPING DURING FULL SYNC

On a full sync option dialog, user can choose to perform ECG grouping as well.



### SWITCH'S ADVANCED TIMING CHANGES

A few changes:

- Advanced Timing settings are only configurable on the master switch (on DCDAL31M2PB) or on the first switch (on DCDALIO-0402). These settings will be taken as universal settings for all switches.
- “Long Press Start” is no longer configurable. Pressing the switch more than the configured “Short Press Period” will be treated as a long press.

### BUG FIXES

This release fixes the following issues:

- Data length limitation on database export: when exporting to access database (mdb), some of the data is truncated resulting in data loss. For example: device location will be truncated to 20 characters only. The following properties are affected:
  - Device (description, location)
  - Input/Output (description, location)
  - Network Variable (description, location)
- Ratio for daylight harvesting is inverted on the DCDAL31MPE sensors: the target with a higher ratio is quicker to dim up; instead it should have the same behaviour as DCDALMS360: slower to dim up.
- Target issue for sensor with firmware 2.007 or above: when configuring sensor firmware 2.007+ for the first time, the targets are not written properly to the sensor. This release should fix this issue however if you are still experiencing this problem, please disable the options Settings > Optimise ECD Sync from the toolbar.
- “Dim Up from Off” option is missing from a Rotary switch.
- Lux Level Target on DCDALMS360 or DCDAL31MPE are not written properly if the value is higher than 255.

# DALIBuildings 2.0.9 Release Notes

March 2015

## WHAT'S NEW

### SUPPORT FOR DCDAL31M FIRMWARE 2

DALIBuildings version 2.0.8 or older will **incorrectly** identify DCDAL31M Firmware 2 as DCDAL31M2PB, meaning that user is allowed to configure features which are not available such as slave switch and LED colour.

**IMPORTANT NOTE:** if your existing database already has DCDAL31M Firmware 2, you must re-scan the DALI line by clicking 'Analyse' from the device list (no need to delete them from the database, just a re-scan). After rescan, DCDAL31M Firmware 2 will be properly recognised.

### EXTENDED VERSION INFORMATION FOR ECD

Extended Version information is now available from DALIBuildings. It will automatically be retrieved when addressing new ECDs. When scanning the DALI line, user has the option to retrieve this information as well.

EA01	Switch		2.005.001
EA02	Switch	Slave: Disabled	2.0
EA03	Switch	Slave: Disabled	2.0

## BUG FIXES

This release fixes the following issues:

- Broadcast target issue: after configuring an ECD's target to a group/address, if the user decides to revert the target back to broadcast, the target is not properly synced to the ECD
- Group selector on Line B issue: selector for Groups on Line B is not properly synced to the controller
- Import/export issue: a few of the ECD properties are not imported/exported properly to the XML

## KNOWN ISSUES

The following issue is known to exist in the software:

- Ballast sorting for offline programming: when ballast is created during offline programming, sorting ballast will rearrange their order in the database.  
**Workaround:** please use a manual sorting by using the 'Swap Address Only' function. This feature will not rearrange the ballast address in the database.
- Device location will be truncated to 20 characters when exported to legacy database format (mdb).  
**Workaround:** please limit device location to 20 characters only.

We are actively working on a fix for this and will release an update as soon as possible.

# DALIBuildings 2.0.8 Release Notes

December 2014

## WHAT'S NEW

### WIRING TEST ENHANCEMENT

Previously wiring test only identifies ballasts. Now performing a wiring test will also identify emergency lights and ECDs.

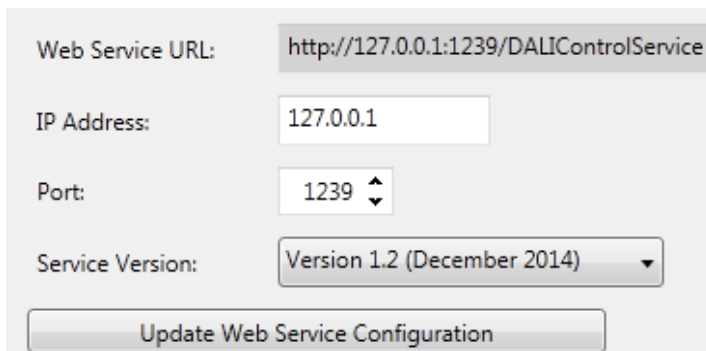
### WEB SERVICE CHANGES

Version 1.2 is now available. It has exactly the same functions as version 1.1, however it fixes a minor issue where some of the web service client cannot recognise the new functions that version 1.1 introduces (eg. *GetControllersPointStatusFormatted* ).

### WEB SERVICE MANAGEMENT TOOL

Web service management tool is now available from Tools > Service Options. The settings available are:

- IP Address & Port: forms the address where the client can consume the web service
- Service Version: the version of web service that should be active; by default it will be Version 1.0



The screenshot shows a configuration window for the web service management tool. It contains four input fields: 'Web Service URL' with the value 'http://127.0.0.1:1239/DALIControlService', 'IP Address' with '127.0.0.1', 'Port' with '1239' and a spinner control, and 'Service Version' with a dropdown menu set to 'Version 1.2 (December 2014)'. Below these fields is a button labeled 'Update Web Service Configuration'.

**IMPORTANT NOTE:** when upgrading from a previous version of DALIBuildings, please manually set 'Service Version' to the desired version. By default it will be set to Version 1.0.

### BUG FIXES

This release fixes the following issues:

- After moving address, "Fail to move address" message is displayed even though the address is successfully moved.
- Exporting controller data to legacy database (mdb) does not export the ECG settings such as MAX/MIN level, Fade Time, etc.
- Unable to sync DC0402 with firmware 2.2.
- ECDs from LineB are not displayed in the UI for Group configuration.
- LED Mode: 'Eco' option is missing from switch with firmware 2.002 or above.
- Default-focus issue (UI issue): some prompt dialogs are not given default focus, forcing the user to manually select the textbox to start editing.

## KNOWN ISSUES

The following issue is known to exist in the software:

- Ballast sorting for offline programming: when ballast is created during offline programming, sorting ballast will rearrange their order in the database.  
**Workaround:** please use a manual sorting by using the 'Swap Address Only' function. This feature will not rearrange the ballast address in the database.

We are actively working on a fix for this and will release an update as soon as possible.

# DALIBuildings 2.0.7 Release Notes

October 2014

## WHAT'S NEW

### WEB SERVICE CHANGES

This release introduces the following new functions:

#### **GetControllersPointStatusFormatted ()**

*Description:*

Returns a comma separated value of all points' status from a controller.

*Parameters:*

Name	Description
siteld	ID of the physical site address
controllerId	Controller's Id. Valid value: 0-999.
lineType	DALI Line of the points. Valid value: <ul style="list-style-type: none"><li>• 0: all DALI Line</li><li>• 1: Line A</li><li>• 2: Line B</li></ul>

*Return values:*

If all points from both DALI line is requested, the return value will be 128 values. However if only a specific DALI line is requested, only 64 values will be returned. Example: "4,0,4,0,256,256,...,256".

#### **SendDaliCommandToPoint ()**

*Description:*

Send a DALI command to a single point or to all points.

*Parameters:*

Name	Description
siteld	ID of the physical site address
controllerId	Controller's Id. Valid value: 0-999.
pointAddress	Point's address. Valid value: <ul style="list-style-type: none"><li>• 0-63: a single point</li><li>• 255: broadcast</li></ul>
lineType	DALI Line of the points. Valid value: <ul style="list-style-type: none"><li>• 0: all DALI Line</li><li>• 1: Line A</li><li>• 2: Line B</li></ul>
isIndirectCommand	Is indirect command? Valid value: <ul style="list-style-type: none"><li>• True: if DALI command (eg. MAX)</li><li>• False: if ARC level</li></ul>
command	Command to be sent. Valid value: <ul style="list-style-type: none"><li>• Valid DALI command (eg. 5 for MAX)</li><li>• ARC level (0-255)</li></ul>

*Return values:*

N/A (void)

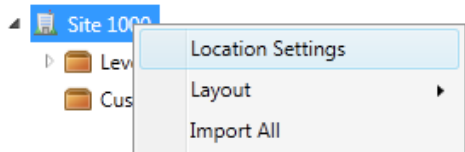
#### **NOTE:**

This release also fixes the issue where DALIBuildings produces a misleading WSDL which exposes all functions as void even though they have return values. **After upgrading, please update your web service client to use the new WSDL.**

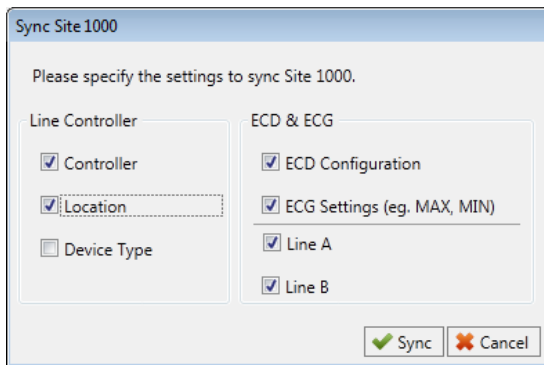
---

## LOCATION CHANGES

Controller's location is now a global setting. User can quickly set all controllers within a Site to have the same location (e.g. Melbourne).



This release also enables user to sync location using the Sync-All feature.



---

## AUTOMATIC QUIET MODE

During controller sync and ballast sorting, DALIBuildings will:

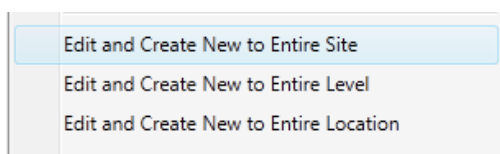
- Inhibit the DALI line: so that sensors are not interrupting the ballast sorting process.
- Stop the controller: if controller is on RUN mode, it will be put to STOP mode temporarily. Upon completion, it will be returned to RUN mode. By stopping the controller, the traffic on the DALI line will be reduced.

---

## SEQUENCE IMPROVEMENT

When creating new sequence, user can specify a sequence Id, rather than using a determined sequence Id.

Also DALIBuildings supports creating a single sequence to other controller(s). User can do this using the 'Edit and Create New..' feature.



---

## BUG FIXES

This release fixes the following issues:

- Default profile on ECD: after controller sync, ECDs failed to go to the default profile. Example: after upgrading controller's firmware then performing sync, the controller will go to profile 1 but the ECDs stay on profile 4.
- Ballast sorting: when sorting ballast, DALIBuildings failed to reflect the address changes to the database.
- Scheduled Timer change: scheduling a change to a Timer was not supported. Now user is able to specify a date and time for a Timer to be reconfigured automatically. This is useful for special occasions which require a once-off Timer change.
- Copy behaviour on offline ECD: some of the properties on an offline ECD failed to be copied to another offline ECD.
- Database settings: editing the SQL Server name textbox freezes the UI.

## KNOWN ISSUES

The following issue is known to exist in the software:

- Ballast sorting for offline programming: when ballast is created during offline programming, sorting ballast will rearrange their order in the database.  
**Workaround:** please use a manual sorting by using the 'Swap Address Only' function. This feature will not rearrange the ballast address in the database.

We are actively working on a fix for this and will release an update as soon as possible.



# DALIBuildings 2.0.6 Release Notes

September 2014

## WHAT'S NEW

---

### SQL SERVER INSTALLATION FIX

This release fixes the SQL Server installation failure. On specific dates, the installer will fail to install SQL Server and returns with 'Out Of Range String' error message.

---

### ECD CONFIGURATION FIX

This release fixes the issue when syncing ECD. If the user only make a few changes (eg. change sensor detection mode from 'Presence' to 'Disabled'), those changes are not applied instantly by the ECD.

---

### WEB SERVICE HELP

This release contains the help file for DALI Web Service.

---

### TREEVIEW AUTO REFRESH AFTER DATABASE IMPORT

The TreeView will be automatically refreshed after a database import to reflect the new data.

---

### MINOR FIXES

This release fixes the following issues:

- **Sorting Ballast:** when sorting ballast with exclusion then going back to sorting all ballasts, the exclusion start address is still taken as the starting address.
- **Ballast Editor:** ballast editor failed to load if there are duplicate addresses.

## KNOWN ISSUES

The following issue is known to exist in the software:

- **Schedule Manager:** currently scheduling a change to a Timer is not supported. Once this feature is enabled in the next release, user will be able to set a date and time for a Timer to be reconfigured automatically. This is useful for special occasions which require a once-off Timer change.
- **Sorting Ballast:** when sorting ballast, the ECD sensors are not automatically inhibited so they can interfere the sort process by turning on or off the ballasts.  
**Workaround:** please manually disable or inhibit the ECD sensors before sorting ballast.

We are actively working on a fix for this and will release an update as soon as possible.

# DALIBuildings 2.0.5 Release Notes

August 2014

## IMPORTANT NOTES

- Before installing the software please read the accompanying document *DALIBuildings Installation Guide*.

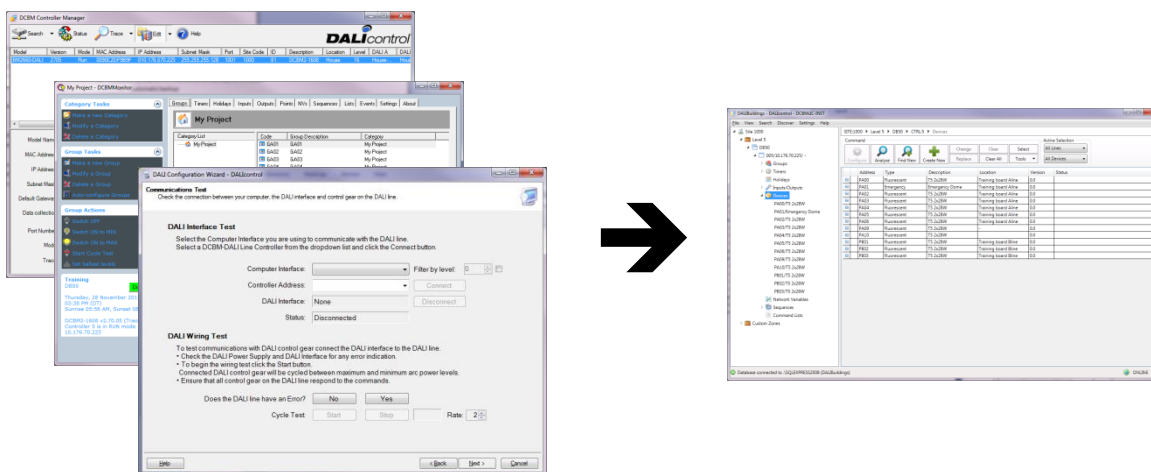
## WHAT'S NEW

- Single Software Solution
- Faster Programming
- Building-Mode View
- Custom Zone Improvement
- Web Service Interoperability
- Robust Data Storage

## SINGLE SOFTWARE SOLUTION

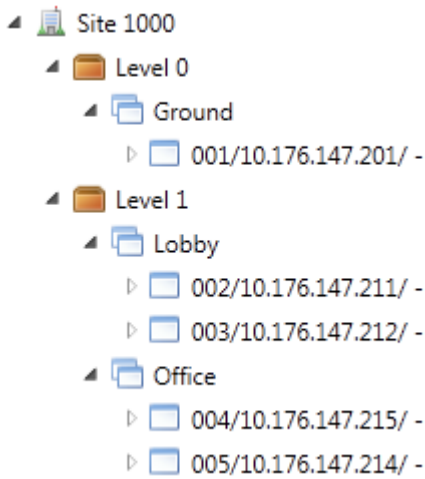
Instead of using different software to commission different part of the project, DALIBuildings can commission a DALI project from start to finish. DALIBuildings has the functionalities from the following software:

- DCBMManager: configures the DCBM controller
- DCBMMonitor: configures Input/Output, Groups, etc.
- DCBMWizard: configures ECGs and ECGs.



### Project-centric approach

It also introduces a project-centric approach rather than previous controller-centric approach which means user is able to see all controllers from a project on one screen. User gets a structural view of the Network layout and it adds the ability to work cross controller (e.g. user can send ON/OFF command to a CustomZone which contains all lift lobbies from every level of a building).



### *Compatibility with existing software*

DALIBuildings has the capability to import from existing databases, so existing project can be converted into using the new solution approach. This will add new benefits such as Web Service (for interoperable with other system, such as the HVAC/Security system) to an existing DALI site.

---

### FASTER PROGRAMMING

With the project-centric approach of DALIBuildings, it enables user for faster programming.

#### *Edit multiple objects*

Some object such as Schedule, Holiday, and Sequence are likely to have the same configuration across all controllers. For example when we are adding a holiday, we would like to add the holiday to all controllers. DALIBuildings enables user to open a holiday as a template then copies the configuration to multiple controllers.

Code	Description	Date
HOL01	Christmas - NY	Dec 23 2013

Edit  
 Edit and Copy to Entire Site  
 Edit and Copy to Entire Level  
 Edit and Copy to Entire Location

#### *Copy-paste*

Copy paste functionality lets the user choose an object as a template then paste it to other objects. Currently you can copy-paste the following:

- ECD behaviour: copy the configuration of an ECD except its target.
- Controller's base configuration: copy all Schedules, Holidays, and Sequences to another controller(s).

	Address	Type	Description
EA01	Sensor		
EA02	Sensor		Set Location
EA03	Sensor		
EA04	Sensor		Copy Behaviour
EB01	Sensor		Paste Behaviour
EB02	Sensor		

*Automatic queuing when syncing or upgrading firmware*


DALIBuildings enables user to sync or upgrade multiple controller. It then creates a queue and executes the task based on the queue.

↑ Move Up	↓ Move Down	✗ Cancel All	✗ Cancel Selected	Clear	⚠ View Failed Device(s)
Id	IP Address	Sync	Line	Progress	
78	10.176.70.221	All	LineA + LineB	<div style="width: 100%; height: 10px; background-color: green;"></div>	Syncing Group 'GA01'
101	172.20.0.101	Controller	LineA + LineB		
72	10.176.70.225	ECD	LineA + LineB		

*Faster ballast address sorting*

DALIBuildings utilises a new sorting algorithm to help user sort their ballast quicker.

Target



**Line A**  
**1**

**Searching target**

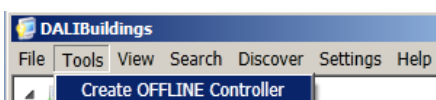
Is the target fitting ON?

(Y)es
(N)o

1 of 11 device addressed

*Program controllers and devices in offline mode*

DALIBuildings allow user to create controllers and devices in offline mode. This allow user to develop their site plan without waiting for the controller/device to be completely installed. Once the user is on site, they can initiate the discovery process and DALIBuildings will recognise and match the offline plan.



**Please confirm your OFFLINE plan**

The following list displays the list of controller(s) found in the network which matches your offline plan.

Please check and confirm if the network condition satisfies your offline plan. By confirming, the offline configuration (e.g. IPAddress, Location, etc) will be synced the actual controller.

Id	PLANNED IPAddress	ACTUAL IPAddress	Confirmed?
5	10.176.70.225	10.176.70.225	<input type="checkbox"/>

Sync OFFLINE plan to ACTUAL controller(s)

If DALIBuildings could not match the OFFLINE plan with the actual controllers, user has the option to manually map a controller to an OFFLINE controller.



**Select OFFLINE Controller to map**

Map the selected controller to an OFFLINE controller.

This action will override the settings of the actual controller with the OFFLINE controller.

Controllerid:  →

IP Address:  →

Id	IP Address	Level	Location	Description
70	10.176.70.220	0	Ground	
71	10.176.70.222	0	Ground	
72	10.176.70.71	0	Ground	

### Offline editing for ballast settings

Ballast settings are now stored in the database. This enables user not only to do offline programming but also to have a backup of the ballast settings.

Configure:

Id	Description	Location
PA00		
PA01		
PA02		
PA03		
PA04		
PA05		
PA06		
PA07		
PA08		
PA09		

Settings

Version No:

Device Type:

Physical Min Level:

Actual Level:

Maximum Level:  100% ▼

Minimum Level:  0.100% ▼

### Better Fault-Finding/Analysis Tool

Since DALIBuildings has all information from a project, analysing your project becomes easier. For example a typical fault finding is to find which ECG/ECD is causing problem in a Group. DALIBuildings will automatically scans the ECDs to find which one is targeting the faulty Group and display the list along with the ECGs.

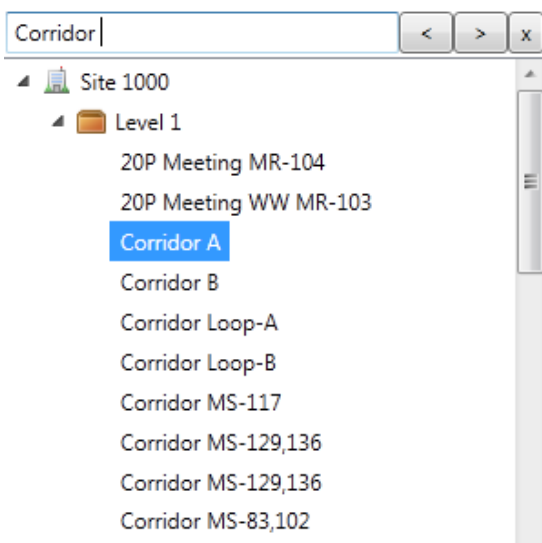
ID	Type	Description	Status
PA03	Emergency	LED Spitfire	OFF, Limit Reached, R
PA13	Fluorescent	1x18W Rec D/L	ON
PA14	Fluorescent	1x18W Rec D/L	ON
PA16	Fluorescent	1x18W Rec D/L	ON
PA18	Fluorescent	1x18W Rec D/L	ON
EA00	Switch		OFF
EA04	Switch		OFF

---

## BUILDING-MODE VIEW

DALIBuildings introduces a new view which simplifies the layout of the project. This view would be ideal when the project is in operational mode since the building operator does not need to know the physical layout of the project.

Unlike the Network-Mode view, it only displays groups from a single level with the ability to do a quick search by the group name.

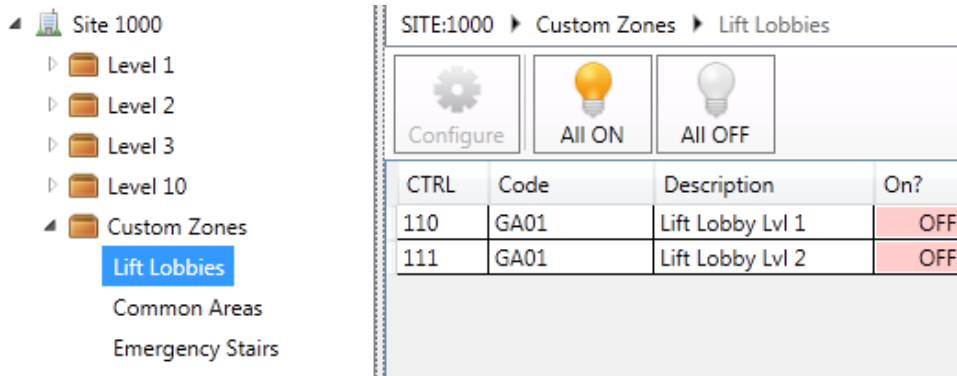



---

## CUSTOM ZONE IMPROVEMENT

### *A more flexible CustomZone*

Instead of having CustomZone as a collection of controllers which share the same commonalities, CustomZone now can be configured as a selection of groups rather than controllers. This adds a greater flexibility when grouping groups from different controllers.



### Broadcast command

DALIBuildings also add the capability to send command to a CustomZone, which will be translated into multiple commands to multiple controllers. Currently only ON/OFF commands are supported.

---

## WEB SERVICE INTEROPERABILITY

DALIBuildings exposes web service functionality which enables interoperability with other system, such as StruxtureWare or any other system which understands XML web service.

This enables the web service consumer to:

- Retrieves up-to-date groups and points status
- Send DALI command via the network

DALIBuildings has its own web service server, so it does not depend on the installation of a separate web server. This means a simpler installation procedure.

---

## ROBUST DATA STORAGE

DALIBuildings uses SQL Server as the database server. User can choose to download a specific DALIBuildings installer which will install an express edition of SQL Server 2008R2 (which gives us a huge storage of 10GB).

Using a database server gives DALIBuildings some advantage:

- Bigger size of database and better performance: since DALIBuildings are now acting as the data collection point for all DCBM controllers to report their up-to-date points and group statuses.
- Advanced data operations such as: security, automatic backup, encryption, failover, and so many more that SQL Server offers.
- Adds flexibility on integration and custom reporting: since SQL Server uses standard SQL queries, third party system or reporting engine can integrate easily to DALIBuildings database.

---

## UPGRADING FROM BETA VERSION

---

## MULTIPLE WINDOWS USER

Generally user does not need to uninstall DALIBuildings BETA before upgrading to the full version. However if DALIBuildings needs to run under multiple Windows account then user need to uninstall DALIBuildings BETA and the SQL Server 2008 R2 which was installed by the beta installer.

To proceed with the uninstallation of DALIBuildings BETA, please read and follow the accompanying document *DALIBuildings SQL Server System Administrator*.

---

## LICENSE DONGLE

User must use a license dongle to run DALIBuildings. The BETA license no longer applies.

## KNOWN ISSUES

DALIBuildings has the following known issues:

- Schedule Manager: currently scheduling a change to a Timer is not supported. Once this feature is enabled in the next release, user will be able to set a date and time for a Timer to be reconfigured automatically. This is useful for special occasions which require a once-off Timer change.
- TreeView does not auto-refresh when performing import from the TreeView's context menu.  
**Workaround:** please use the import feature from the toolbar (File > Import/Export) or simply restart the application.

We are actively working on a fix for this and will release an update as soon as possible.