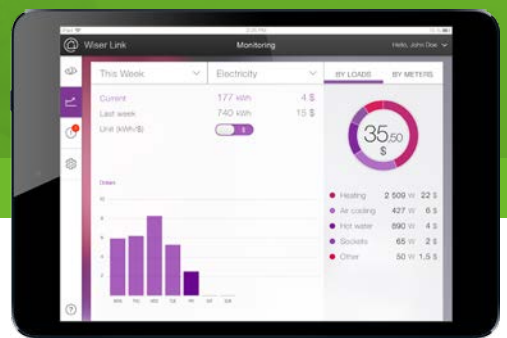


Wiser Link

Energy Management Assistant

Measure and monitor your energy consumption — anywhere anytime.

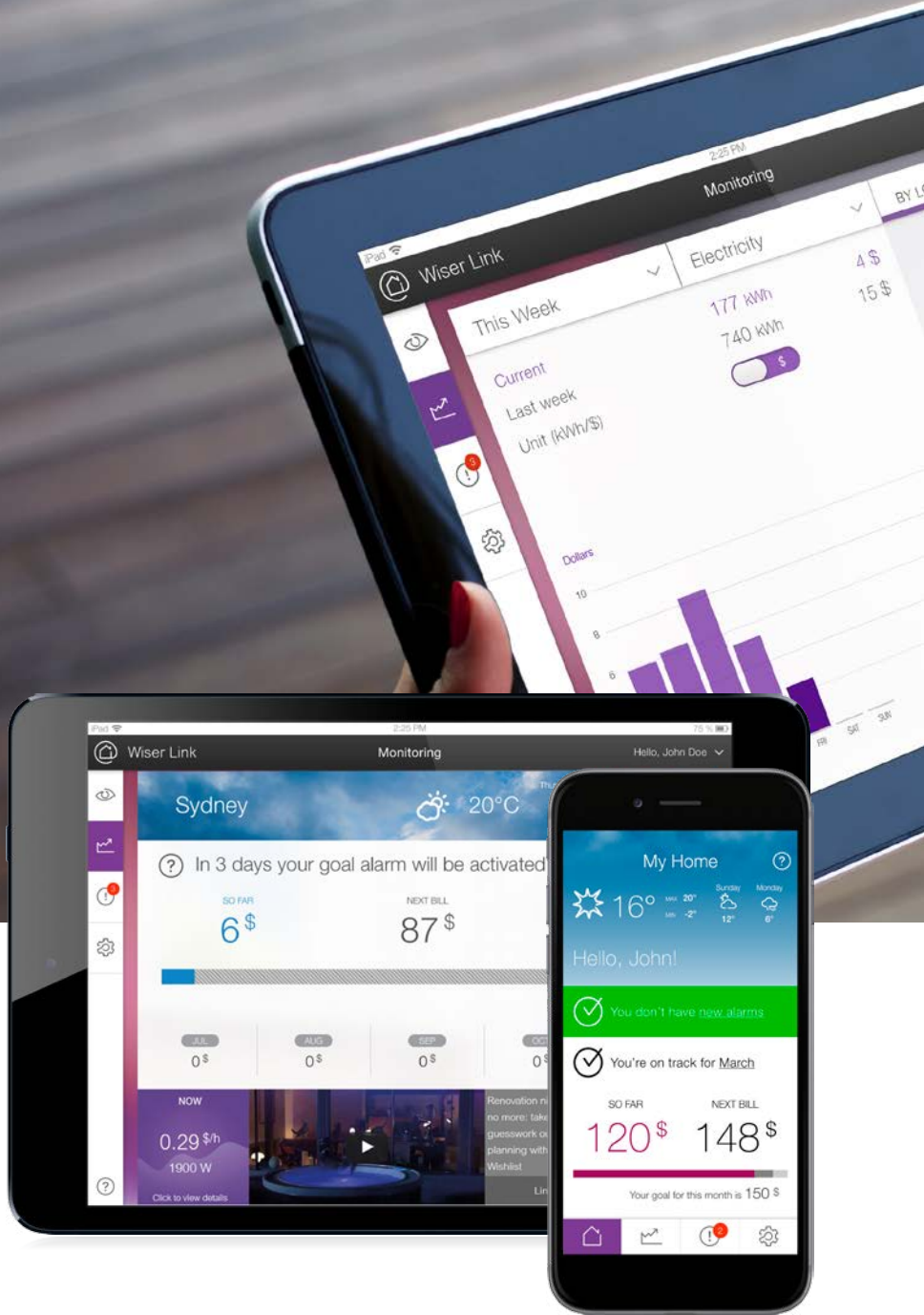


clipsal.com/wiserlink

Life Is 

CLIPSAL
by Schneider Electric

Measure and monitor your energy consumption — anywhere anytime.



Wiser Link is your energy-management assistant

Wiser Link is a user-friendly app and system that lets you measure and monitor your electricity, gas and water use. It's like having your very own energy consultant on-call. Even better, Wiser Link allows you to personalise and manage your energy consumption the way that best suits you.

Take control of your energy and reduce your bills

Heating, cooling, hot water, lighting... Wiser Link allows you to clearly understand how much energy each electrical device in your home is using. With this information, you have the knowledge to make changes that will reduce your energy bills. As the saying goes, "knowledge is power" — or in this case, "less power".

Home is where the app is

Because Wiser Link is an app, you can stay connected to your home 24/7 no matter where you are in the world. As long as you're connected to the net, you're connected to your home and can monitor electricity, gas and water use — even while sipping a Margarita in Tijuana or trekking in Nepal.



Solution connecting you to your switchboard

Your personal energy coach

All of us sometimes need a friendly tap on the shoulder in order to achieve our goals. That's why you can easily personalise Wisers Link to send you notifications for when you've reached or exceeded your monthly energy targets.

It can even send you an alert if you're away and there's a power loss to something important like your fully stocked freezer, or if your surge protection has been tripped. You will know straight away and can organise to have the problem fixed, so there's no nasty surprises upon your return.



*Apple is a trademark of Apple Inc.



*Google Play is a trademark of Google Inc.

With Wisers Link you're in charge and in-the-know

- Display energy consumption by meter; electricity, gas and water (separate meters required).
- Display consumption by specific area or appliance i.e. kitchen or outdoor pool - air conditioning or hot water.
- Monitor energy expenses.
- Analyse consumption by hourly, daily, monthly graphs.
- Report on real-time energy consumption.
- Compare consumption trends to previous months.
- Connection to your home when you are away.
- Notifications/alerts abnormalities and energy targets, i.e. power outages, contract limits, reaching or exceeding monthly energy targets, etc.
- Input service provider details and tariffs.

For more information about Clipsal Wiser Link, contact your local Clipsal and Schneider Electric Partner Business Representative, electrical wholesaler or visit clipsal.com/wiserlink

Schneider Electric (Australia) Pty Ltd

33-37 Port Wakefield Road
Gepps Cross, South Australia, 5085

PO Box 132, Enfield Plaza
South Australia 5085

www.schneider-electric.com.au

SEAU145178

©2015 Schneider Electric. All Rights Reserved
All trademarks are owned by Schneider Electric Industries SAS or its affiliated companies.

Consumer Support Enquiries

Enquires: 1300 669 925
clipsal.com/contactus

National Customer Care (Trade Only)

Enquires: 1300 369 233
Email: plugin@clipsal.com.au

Access this document directly:
clipsal.com/brochures

This document has been
printed on recycled paper

